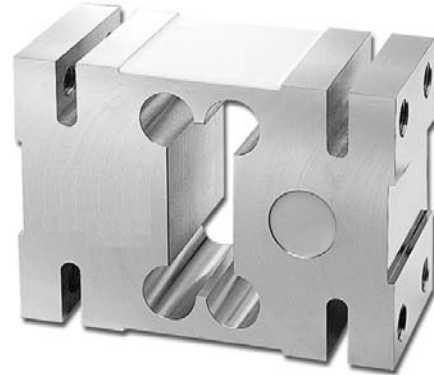


## High Capacity Off-Center Single-Point Load Cell

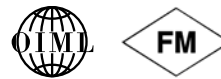
### FEATURES

- Capacities: 750, 1000, and 2000 kg
- Fully sealed for water resistance
- Side mount construction
- Anodized aluminum alloy
- OIML C3 approval
- Platform size: 48" x 48"/120 cm x 120 cm
- **Optional**
  - FM approval available



### APPLICATIONS

- Platform scales (single load cell)
- Packaging machines
- Dosing/filling
- Belt scales/conveyor scales

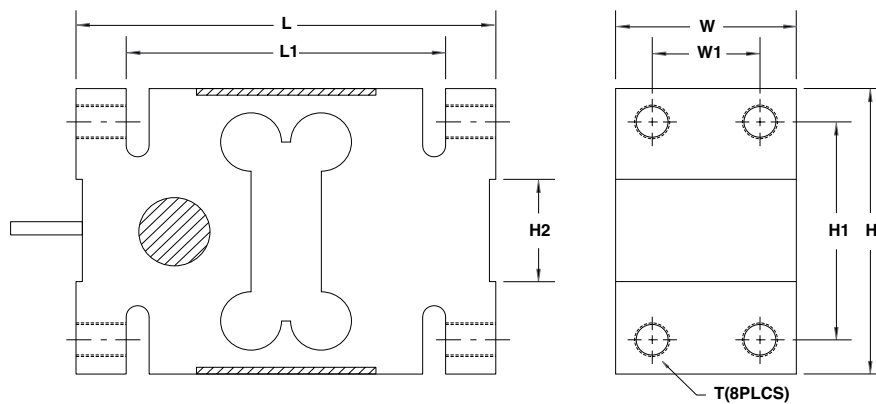


### DESCRIPTION

HOC is a single-point load cell of side mount construction designed for platform scales, and hanging scales. It is a cost-effective load cell for scales of simple construction.

HOC is constructed of anodized aluminum, and is environmentally sealed up to IP66 providing excellent protection against moisture and humidity.

### OUTLINE DIMENSIONS



All Capacity  
Cable Length: 10/3.1m  
Platform Size: 48" x 48"/120 cm x 120 cm

**Wiring**  
+ Excitation Red  
- Excitation Black  
+ Signal Green  
- Signal White

CAPACITY (kg)		L	L <sub>1</sub>	W	W <sub>1</sub>	H	H <sub>1</sub>	H <sub>2</sub>	T
750/1000/2000	mm	176.0	134.5	76.0	46.0	125.0	95.0	45.0	M16 x 2.0
	(inch)	6.93	5.30	2.99	1.81	4.92	3.74	1.77	

## High Capacity Off-Center Single-Point Load Cell

SPECIFICATIONS			
PARAMETER	VALUE		UNIT
NTEP/OIML accuracy class	Non-Approved	C3	
Maximum no. of intervals (n)	1000	3000	
$Y = E_{max}/V_{min}$	5000	10000	Maximum available
Standard capacities ( $E_{max}$ )	750, 1000, 2000		kg
Rated output—R.O.	2.0		mV/V
Rated output tolerance	10		±% of rated output
Zero balance	1		±% of rated output
Non-linearity	0.020	0.015	±% of rated output
Hysteresis	0.020	0.015	±% of rated output
Non-repeatability	0.020		±% of rated output
Creep error (20 minutes)	0.030	0.020	±% of rated output
Zero return (20 minutes)	0.030	0.020	±% of rated output
Temperature effect effect on min. dead load output	0.0026	0.014	±% of rated output/°C
Temperature effect on sensitivity	0.0015	0.008	±% of applied load/°C
Compensated temperature range	-10 to +40		°C
Operating temperature range	-20 to +60		°C
Safe overload	150		% of R.C.
Ultimate overload	200		% of R.C.
Excitation, recommended	10		VDC or VAC RMS
Excitation, maximum	15		VDC or VAC RMS
Input impedance	410±10		Ω
Output impedance	350±3		Ω
Insulation resistance	>5000		MΩ
Construction	Anodized aluminum		
Environmental protection	IP66		

All specifications subject to change without notice.

### FM Approval

Intrinsically Safe: Class I, II, III; Div. 1 Groups A-G

Non-Incendive: Class I; Div. 2 Groups A-D